

Ausführung / construction: Mono mit Tragkäfig / single turn with bracket

Welle / shaft: \varnothing 4 mm, L = 30 mm

Buchse / bushing: M7 x 0,75

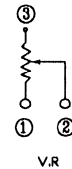
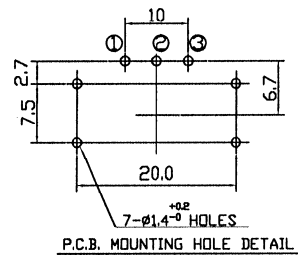
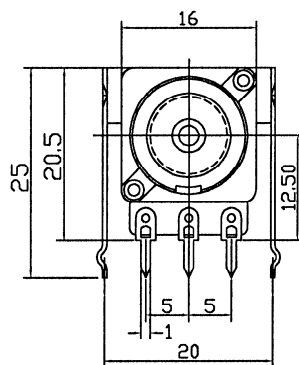
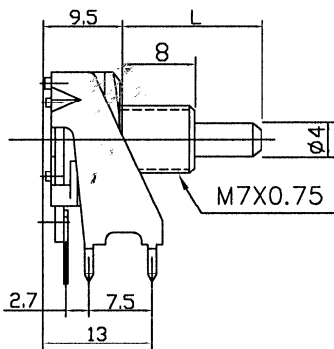
Drehbereich / rotation angle: $270^\circ \pm 5\%$

Belastbarkeit / rated wattage: lin. 0,2 W / log 0,05 W

Printausführung / for printed circuits (PC)

Kontakte: SPCC, kalt gewalzter Stahl, vernickelt / Cold rolled steel sheets, nickel plated

ALPHASTAT 16 63250-114XX



	Standard 63250-11400/—			Mittenrast / center click 63250-11410/—			Rast 11 / 11 clicks 63250-11420/—			Rast 41 / 41 clicks 63250-11440/—		
	lin.	poslog	neglog	lin.	poslog	neglog	lin.	poslog	neglog	lin.	poslog	neglog
1 k	2482	2495		2522	2535		2562	2575		2602	2615	
2 k			2510			2551			2590			2630
2,5 k	2483	2496		2523	2536		2563	2576		2603	2616	
5 k	2484	2497	2512	2524	2537	2552	2564	2577	2592	2604	2617	2632
10 k	2485	2498	2513	2525	2538	2553	2565	2578	2593	2605	2618	2633
25 k	2486	2499		2526	2539		2566	2579		2606	2619	
50 k	2487	2500	2515	2527	2540	2555	2567	2580	2595	2607	2620	2635
100 k	2488	2501	2516	2528	2541	2556	2568	2581	2596	2608	2621	2636
250 k	2489	2502		2529	2542		2569	2582		2609	2622	
500 k	2490	2503		2530	2543		2570	2583		2610	2623	
1 M	2491	2504		2531	2544		2571	2584		2611	2624	

* lagermäßige Ausführungen \\ * in stock