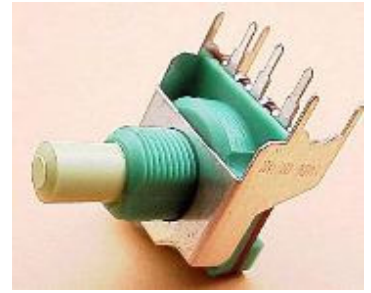




Entsprechend RoHS
(EG2002/95/EC)



ALPHASTAT 16 BR16ECO

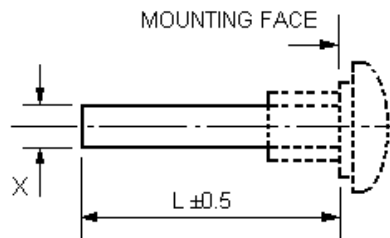
Ausführung / construction: ISO

Welle / shaft: \varnothing 4 mm, L = 30 mm
 \varnothing 6 mm, L = 35 mm

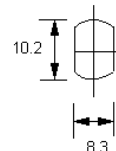
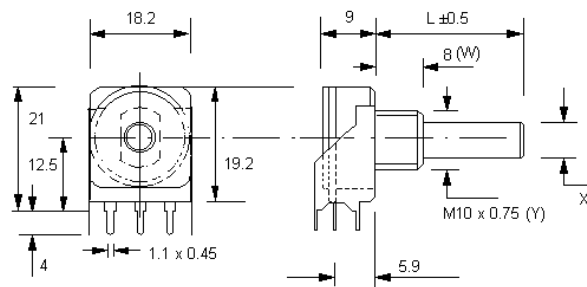
Buchse / bushing: M10 x 0,75

Drehbereich / rotation angle: 300°

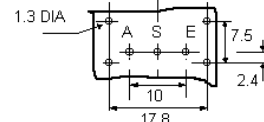
Printausführung / for printed circuits (PC)
Conductive Plastic



Type	Desc. (X)	L (mm)
F21	\varnothing 4 mm	14 - 35
F1	\varnothing 6 mm	14 - 65



Bush mounting panel cut out.



Viewed on component side

	4 mm Welle F21-PC			6 mm Welle F1-PC			4 mm Welle F21-OW			6 mm Welle F1-OW		
	lin.	poslog	neglog	lin.	poslog	neglog	lin.	poslog	neglog	lin.	poslog	neglog
100 R												
220 R												
470 R												
1 k	7552			7632								
2,2 k	7553			7633								
4,7 k	7554	7557		7634	7647							
10 k	7555	7558		7635	7648							
22 k	7556	7559		7636	7649							
47 k	7557	7560		7637	7650							
100 k	7558	7561		7638	7651							
220 k	7559	7562		7639	7652							
470 k	7560	7563		7640	7653							
1 M	7561			7641								
2,2 M												
4,7 M												

* lagermäßige Ausführungen \\ * in stock