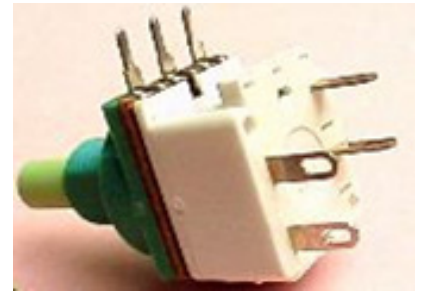


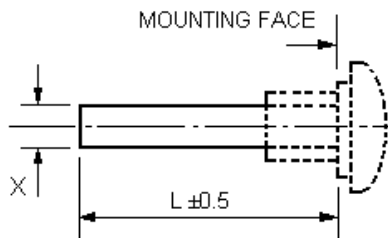


Entsprechend RoHS
(EG2002/95/EC)
Prüfzeichen EN 61058-1

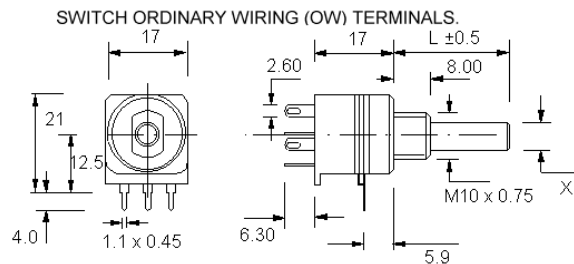


ALPHASTAT 16 PC16ECO/B40W2S

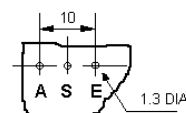
Ausführung / construction: ISO, Drehschalter / rotary switch, 2-pol ON/OFF
 Welle / shaft: Ø 4 mm, L = 30 mm
 Ø 6 mm, L = 35 mm
 Buchse / bushing: M10 x 0,75
 Drehbereich / rotation angle: 300°
 Printausführung / for printed circuits (PC)
 Lötanschluss / solder terminals
 Conductive Plastic



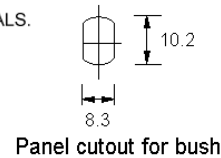
Type	Desc. (X)	L (mm)
F21	Ø 4 mm	14 - 35
F1	Ø 6 mm	14 - 65



POTENTIOMETER with PRINTED CIRCUIT (PC) TERMINALS.



Viewed on component side.



Panel cutout for bush

	4 mm Welle F21-PC			6 mm Welle F1-PC			4 mm Welle F21-OW			6 mm Welle F1-OW		
	lin.	poslog	neglog	lin.	poslog	neglog	lin.	poslog	neglog	lin.	poslog	neglog
100 R												
220 R												
470 R												
1 k	7432			7512*								
2,2 k	7433			7513*								
4,7 k	7434	7447		7514*	7527							
10 k	7435	7448		7515*	7528							
22 k	7436	7449		7516*	7529							
47 k	7437	7450		7517*	7530							
100 k	7438	7451		7518*	7531							
220 k	7439	7452		7519*	7532							
470 k	7440	7453		7520*	7533							
1 M	7441			7521*								
2,2 M												
4,7 M												

* lagermäßige Ausführungen \\ * in stock